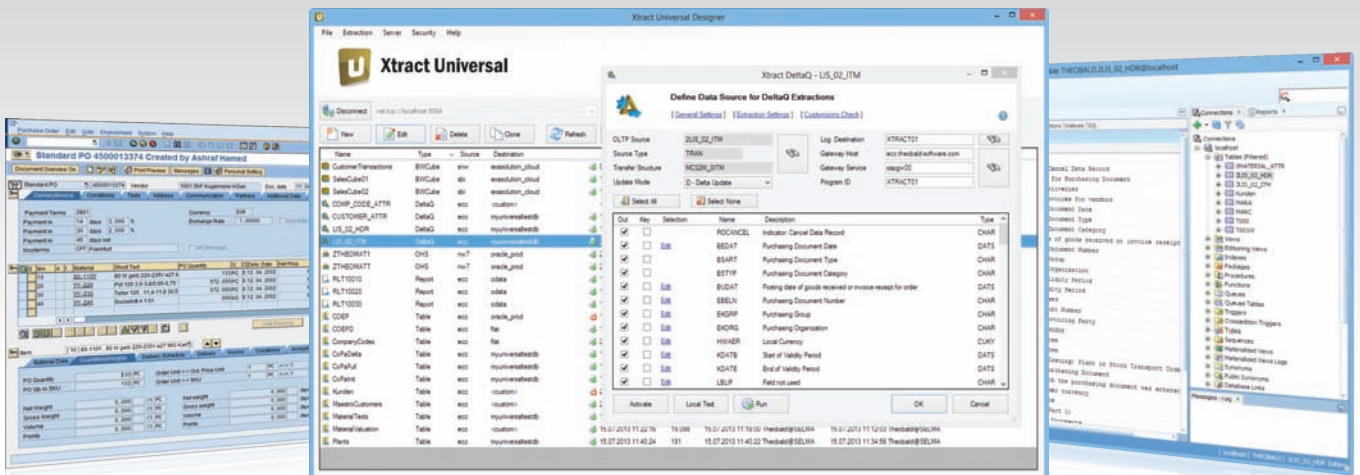


Instant Data Warehousing with SAP data



- » Extracting your SAP data to any destination environment
- » Fast, simple, user-friendly
- » 8 different SAP interface technologies
- » Graphical user interface – no programing knowledge required
- » Central security management and monitoring
- » Module-independent extraction from SAP ERP and BW
- » Instant data warehousing for maximum design performance



Xtract Universal

Overview

Xtract Universal enables you to save data streams from SAP to **any destination environment**, and thereby significantly reduce development time, thanks to a **high degree of automation**.

The result is maximum ROI with minimum risk and cost. In addition, Xtract Universal is also virtually independent of the client's desired or existing data warehouse technology, and can therefore also be integrated into existing data integration landscapes:

ORACLE

tableau

Microsoft SQL Server

Amazon Redshift

IBM Db2

TERADATA

EXASOL

Qlik

alteryx

salesforce

Microsoft Azure
Blob Storage
SQL Data Warehouse

Power BI

SAP HANA

MySQL

VERTICA

SharePoint

GoodData

MicroStrategy

Alteryx Connect

amazon web services S3

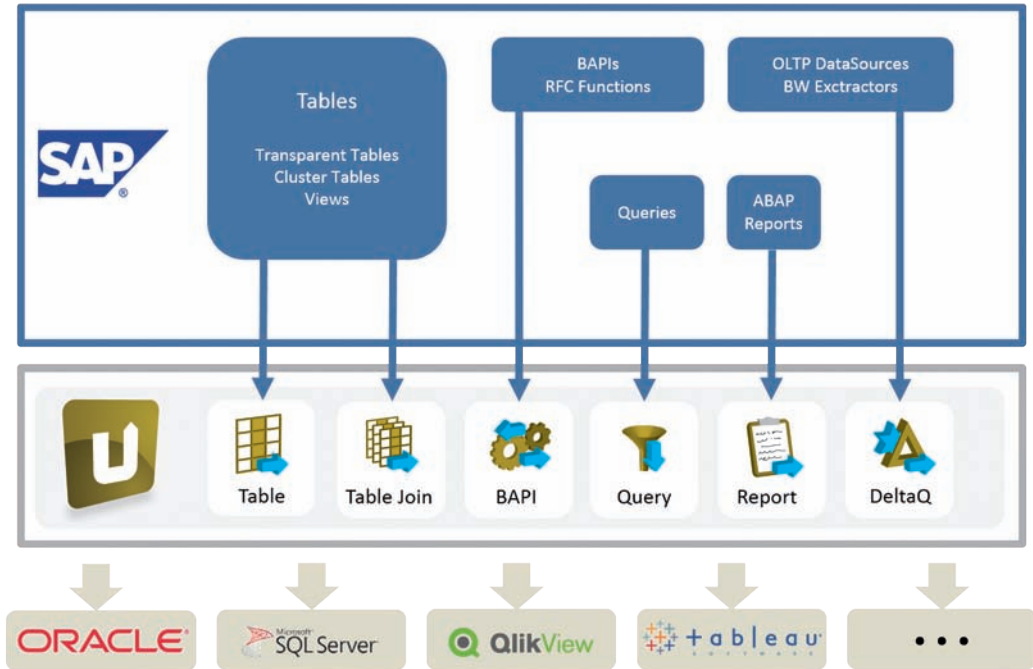
+ Generic transport protocols, such as OData, CSV, and HTTP

Scaling and security: Enterprise-ready

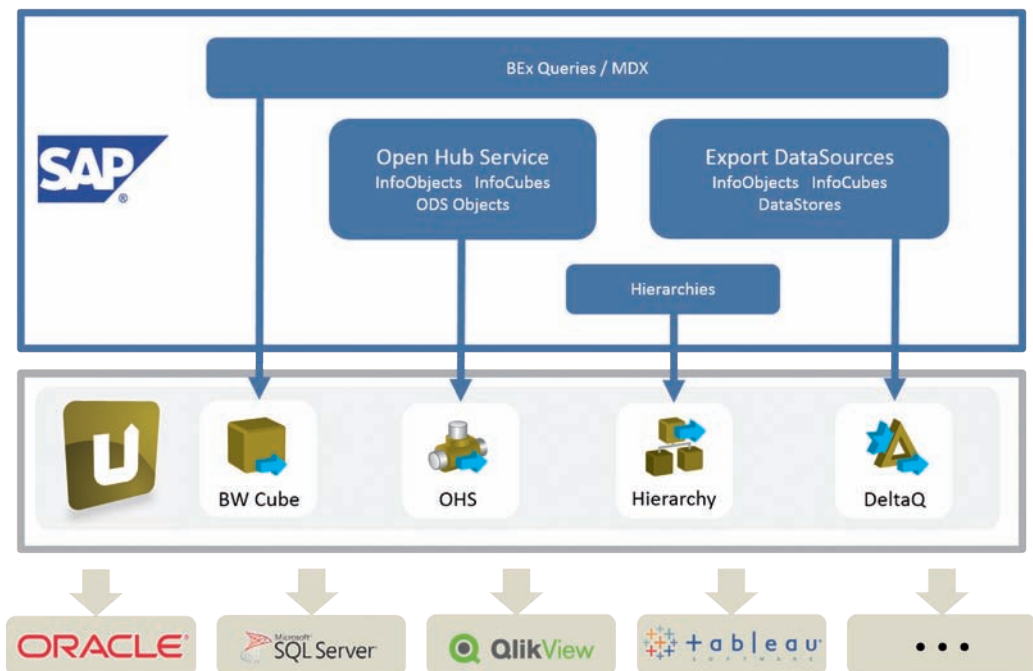
Whether intended for use as a data mart solution for individual departments or subsidiaries or as part of an enterprise-wide BI strategy, Xtract Universal can meet all IT and specialist user requirements:

- » Central monitoring of all extraction activities and detailed logging
- » Wide variety of extraction types that can be used to extract data from all SAP modules and SAP BW
- » Security and user management with optional active directory linking for handling highly sensitive data
- » Integrated data type safety and traceability, from source through destination

Integration of SAP ERP



Integration of SAP BW

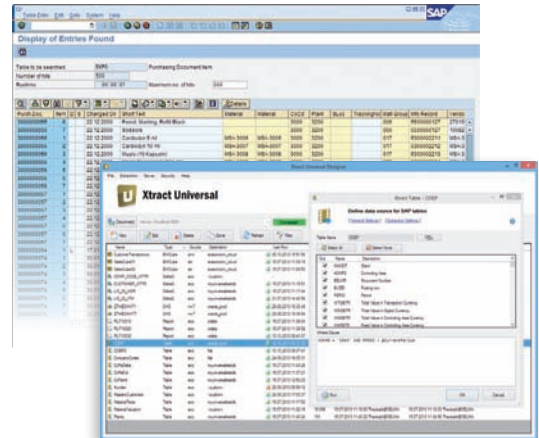


Table, Table Join & Query

With Xtract **Table, Table Join & Query**, mass data can be extracted quickly and reliably.

Any kind of WHERE statements can also be processed to restrict data as desired. Dynamic SQL statements are supported by the use of variables. It is also possible to link (**Join**) and aggregate tables.

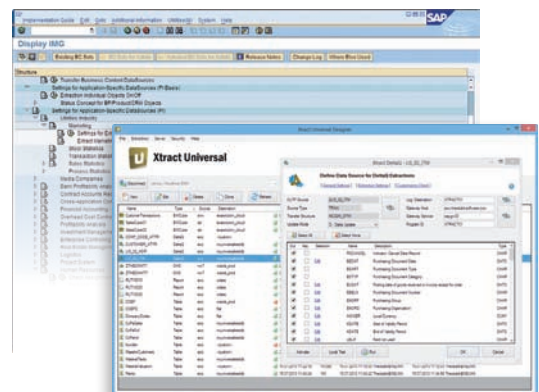
Xtract **Query** makes type-safe data flows from SAP queries available in a matter of seconds. The selection screens can be dynamically filled with variables.



DeltaQ

The Xtract **DeltaQ** component is the flagship Xtract component for Business Intelligence applications.

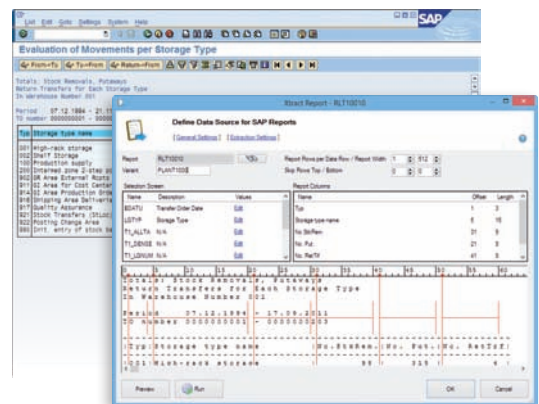
DeltaQ can be used to access the extractor API of the SAP system, and thereby utilize the functionality that BW systems also use to manage their data supply from the ERP production system. This ensures real, secure delta transfer of data.



Report

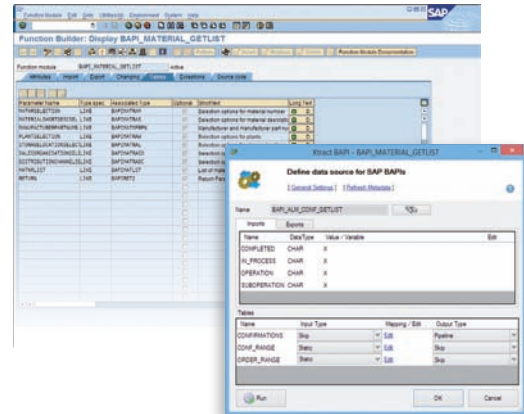
With Xtract **Report**, ABAP reports can be used as data sources.

This ensures maximum investment security when migrating to non-SAP environments: Existing reports and their business process logic do not need to be rebuilt – which would entail a certain amount of outlay – as they can continue to be used with Xtract Report.



BAPI

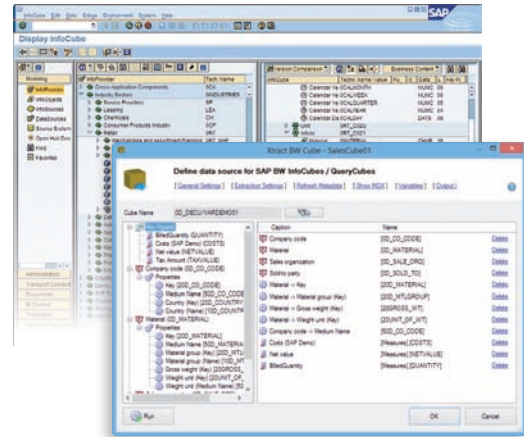
The **BAPI** component can be used to integrate BAPIs and RFC function modules directly into the data flow. This means that business process logic on the SAP system side can be used to retrieve data.



BW Cubes

The drag & drop function can be used to easily extract attributes and key figures from **BW Cubes** and **BEx Queries**. This turns complex, multidimensional data structures into relational data that is easy to handle.

Data is dynamized using query variables. A packaging function is available for handling large data volumes.

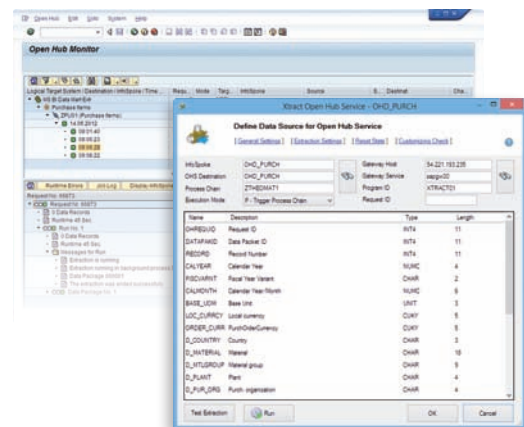


Hierarchy, Open Hub Service

Xtract **Hierarchy** extracts hierarchies from an SAP BW system. Additional optional features can be activated to also simultaneously extract description texts or remove leading zeroes from the data, for example. Xtract Hierarchy supports the parent/child and natural display formats.

With the **Open Hub Service (OHS)**, SAP provides an integrated extraction method for cubes, InfoObjects, ODS objects, and more.

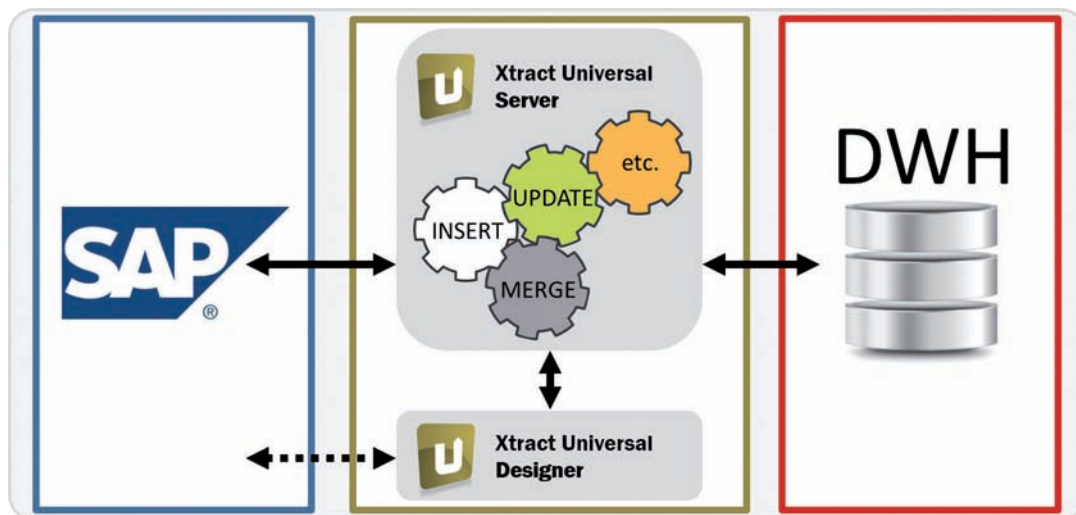
Xtract OHS supports all OHS processes through to delta extraction.



Instant data warehousing – maximum design performance

The idea of instant data warehousing with Xtract Universal is to make the load process design **as simple, and therefore as fast as possible**.

Whether you want to create a company-wide enterprise data warehouse or set up a data mart for a single task or a department, the first step is always to retrieve the relevant data.



Automatic conversion of SAP objects

The relevant destination object can be very easily created from the SAP source object automatically. During this process, the metadata for the object in question is optimally and automatically transferred to the destination. A customer number that consists of 10 digits in the SAP system, for example, will also have 10 digits in the destination system. The accuracy of a value field with three decimal places will not be affected. This process is generally referred to as **type safety** and is systematically implemented for Instant Data Warehousing.

The processing of data content works just like the automatic procedure for transferring metadata. In the simple case of a full load, the entire SAP object is replicated. Even more interesting is the **incremental delta load** process, that is, the limiting of the download to the data content that has been changed or added since the last download. The data to be loaded is then updated against the data already available in the target system from previous data runs. The data update can either also be **automatic** or, depending on the client's specific requirements, extended to include **individual add-ons in the load process**.

Integration in existing landscapes

Almost any standard scheduler can be used to trigger the extraction process – in the simplest case, using the Windows Task Scheduler. Even SAP's job control system can trigger the data transfer, depending on the desired architecture

Downstream transformation processes work analogous to extraction scheduling. If the desired architecture requires the use of an ETL or ELT tool, such as Informatica, Talend, or Oracle Data Integrator, these can be simply added to the automatically generated destination objects.

Destinations

Maximum flexibility in heterogeneous data warehouse landscapes

Xtract Universal supports a number of environments as the target for the data extraction, including **Oracle, Tableau, MS SQL Server, IBM DB2, Teradata, EXASolution, Qlik** and many more. In addition, data streams are also provided in other common formats, such as **OData, CSV, and XML**, to facilitate access to target environments that are compatible with such formats (for example, Excel, Access, Tableau and a large number of third party software producers and OEM partners).

The architect or power user decides on the degree of automation. In the simplest case, the SAP source object is replicated in the relevant target environment, where it is compiled automatically together with all its metadata. The data types are transferred with as few changes as possible. Standardized conversion routines (for SAP date fields, for example) guarantee quick results and provide the architect with the best possible support. This, of course, is also the case for updating deltas, that is, data that has changed since the last data extraction.

If desired, every detail of the transfer process can also be managed. This means that the architect can choose to adjust the user and metadata from the SAP source as they wish already during the data transfer process– this can include simple type conversions or format conversions, as well as master data historization, quality checks, and individual routines for updating incremental data.

All of these processes are mapped using the relevant SQL dialects for the target systems and a powerful, in-house script language. Depending on the architecture, other target system options can also be utilized, such as Macros or more complex procedures.



Xtract Universal

License and costs

- » Licensed **per server**.
- » For current Xtract Universal prices, please visit our website or contact us.

Maintenance

6 months maintenance & support included.

- » Always up to date.
- » Support from our team: e-mail, telephone, or online helpdesk
- » Want to continue to benefit from our excellent service at the end of the 6 months? No Problem! You can extend your maintenance on an annual basis for 20% of the current valid list price.

Demo version

Evaluate for 4 weeks without costs and without any restrictions.

- » Take your time to get to know Xtract Universal.
- » Benefit from our free pre-sales support service during your product trial.
- » You can renew your product trial on request.

About us

Theobald Software GmbH has more than 10 years experience in designing and developing SAP interfaces.

Thanks to our innovative know-how, combined with experience with more than 2,500 international customers, Theobald Software GmbH is able to provide a solid basis for software and associated entrepreneurial processes. Optimum transparency, individual customization, and flexibility are guaranteed, without losing sight of costs.

Contact us – we look forward to hearing from you!

Your Theobald Software GmbH team

Office Stuttgart

Theobald Software GmbH
Kernerstraße 50 | 70182 Stuttgart | Germany
Phone: +49 711 46 05 99 0
Email: info@theobald-software.com

Office Seattle

Theobald Software, Inc.
2211 Elliott Ave. | Suite 200 | Seattle, WA 98121 | USA
Phone: +1 206 68196 38
Email: info@us.theobald-software.com

Office Hong Kong

Theobald Software Asia Ltd.
Suite 1 & 2 24/F | 135 Bonham Strand Trade Centre
135 Bonham Strand East | Sheungwan | Hong Kong
Phone: +852 3423 0401
Email: info@theobald-software.com.hk

www.theobald-software.com



powered by



ERPConnect

SAP® Certified
Integration with SAP® S/4HANA