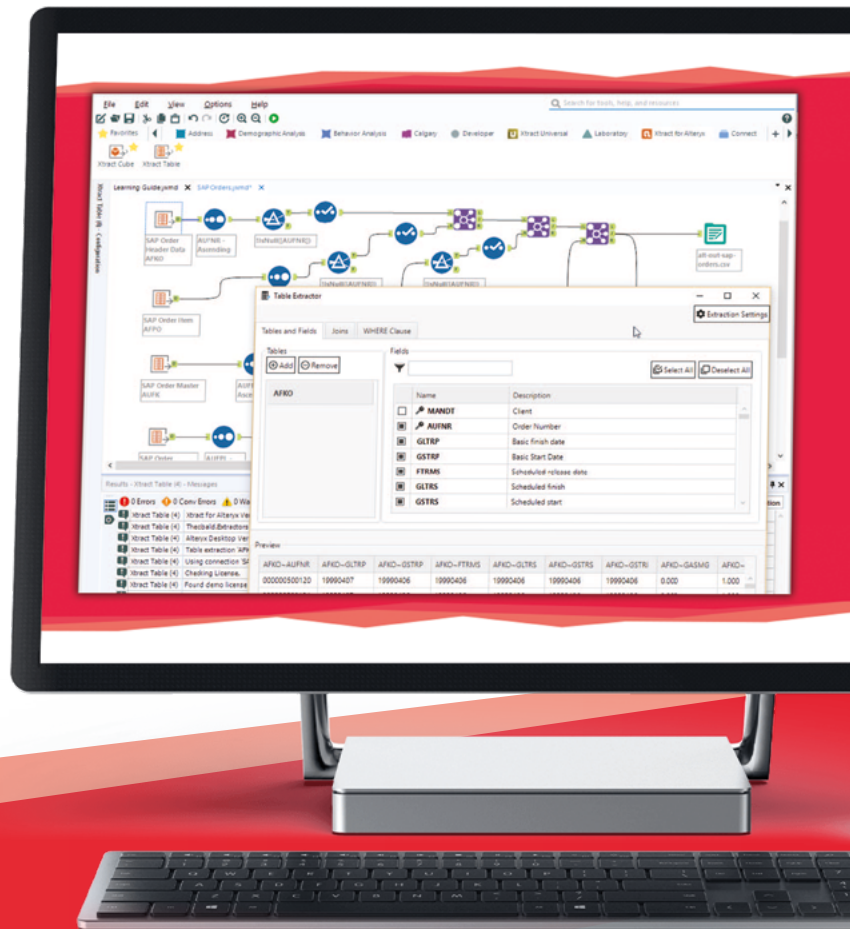




## <Seamless Integration of SAP and Alteryx>

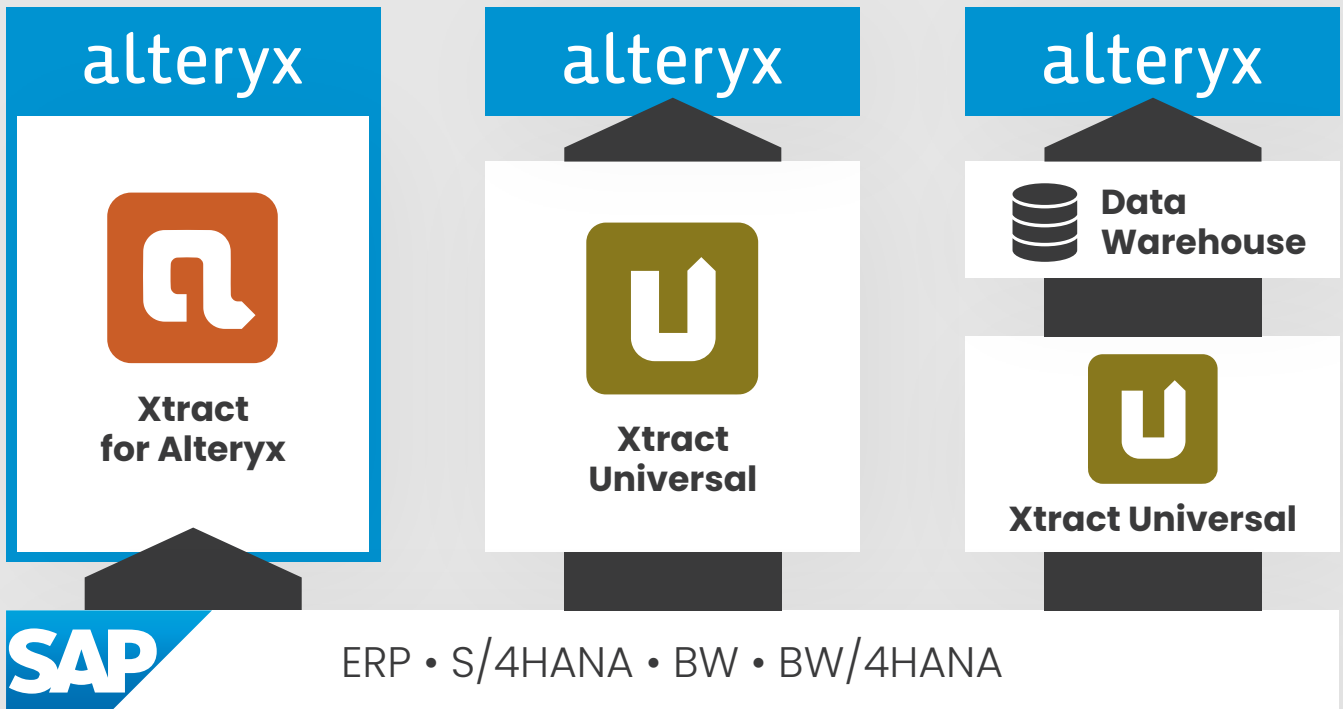
**One goal - two products - three approaches.**

Every use case is individual. That's why we offer three high-performance approaches for the different requirements for the seamless integration of SAP and Alteryx.



### Your benefits at a glance:

- > Choose of three possible approaches for your individual requirements
- > Robust and standardized process for incremental loads (CDC)
- > **No code** required, do it all without SAP GUI
- > Intuitive user interface with quick and easy setup
- > Simply **drag and drop** to connect to your SAP system of your choice
- > Based on **SAP certified** technology
- > Central **access of relevant SAP data** for all employees via your existing Analytics Automation Platform
- > Avoid data redundancies, incorrect entries, and system failures
- > **Cost savings**, since employees do not need expensive SAP training and learning materials



**<Xtract for Alteryx:  
The embedded approach>**

**Xtract for Alteryx** enables you to seamlessly integrate your SAP data into Alteryx – without any programming effort and very simple drag & drop within the Alteryx Designer. These extractions are triggered by the Alteryx Designer (data pull). In this way you can use data from your SAP system in combination with curated data from other Alteryx connected data sources and integrate them into one dataflow.



**<Xtract Universal with the Alteryx Add-On:  
The universal approach>**

In comparison to the embedded solution Xtract for Alteryx, a different approach is used by the standalone tool Xtract Universal. With **Xtract Universal**, Alteryx can access the SAP data as a stream from SAP. In this scenario, the extractions, which were built by the central IT department or the Alteryx user, are triggered by the Alteryx workflow (data pull). The use of the SAP extractors enables an incremental extraction of your SAP data.



**<Xtract Universal with a database (e.g. SQL Server):  
The storage approach>**

**Xtract Universal** as a stand-alone tool also offers the integration of SAP data into common data warehouse solutions. In this architecture, a data warehouse solution will be used as a staging repository. The extractions are triggered with a command line executable (data push). The central IT department as well as the Alteryx user can build the SAP extraction in Xtract Universal. Alteryx can access the SAP data from your database of choice. By using SAP's own extractors, your SAP data can be provided incrementally.

**Curious and want to know more?**

Test our products with our free demo versions at [theobald-software.com/en/download-trial](https://theobald-software.com/en/download-trial)

